

# HOME GOOD

## ENDING HOMELESSNESS IN LOS ANGELES COUNTY



# agenda

- 1. Introductions:** Who are we?
- 2. Looking Back:** How did we get started?
- 3. Progress to Date:** What's been achieved?
- 4. Context:** Where are we now?
- 5. Looking Forward:** What's next?

# Introductions

*who are we?*

- **Chris Ko**

Director, Homeless Initiatives



**Crisco**

**All-Vegetable Shortening**

**GREAT FOR COOKING & BAKING**

Use Instead of Butter or Margarine

**50%** Less Saturated Fat Than Butter

**0g** Trans Fat per serving

SEE NUTRITION INFORMATION FOR FAT AND SATURATED FAT PER SERVING



Community Chest

ERROR ON  
BAR TAB

COLLECT \$20



-board

Looking Back

*how did we get started?*

Homelessness has real costs

**\$1 Million**

**\$100 Million**

**\$1 Billion**



...and real solutions -

**Housing First**  
**is successful**  
**88%** of the  
(compared to under 50% in traditional homeless intervention)  
**time**

... and  
**it's 43%**  
cheaper  
than leaving someone on the  
**streets**

We're over  
**200**  
cross sector partners  
strong and creating  
**change**





**Skid Row**  
**CITY LIMIT**  
**POP Too Many**    **ELEV 2008**

NO PARKING  
ANYTIME  
ON THIS STREET  
OR ADJACENT  
ALLEYS





# Home For Good's

## *Theory of (Systems) Change*

1. **Clear Data**
2. **Sufficient Resources**
3. **Efficient Connections**
4. **Strong Will**

# Progress-to-Date

*what's been achieved?*

# #1: Clearer Data

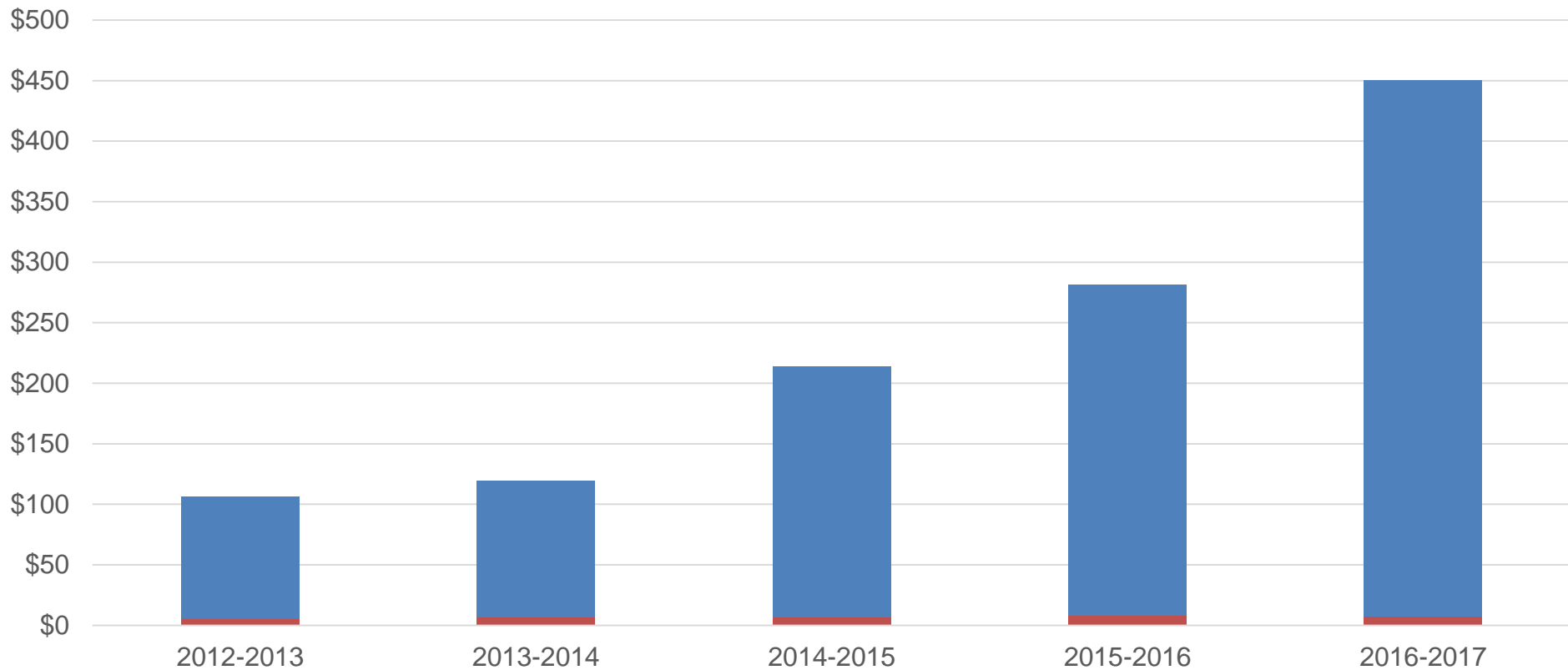
## Before

- Bi-Annual Count
- 20% Coverage
- Compliance database
- No Public Goals/Metrics

## After

- Annual Count
- 100% Coverage
- Database overhaul
- City + County measures
- Monthly Dashboards

# #2: Expanded Resources



■ Private ■ Public

Strategically invested  
\$34M in private funds

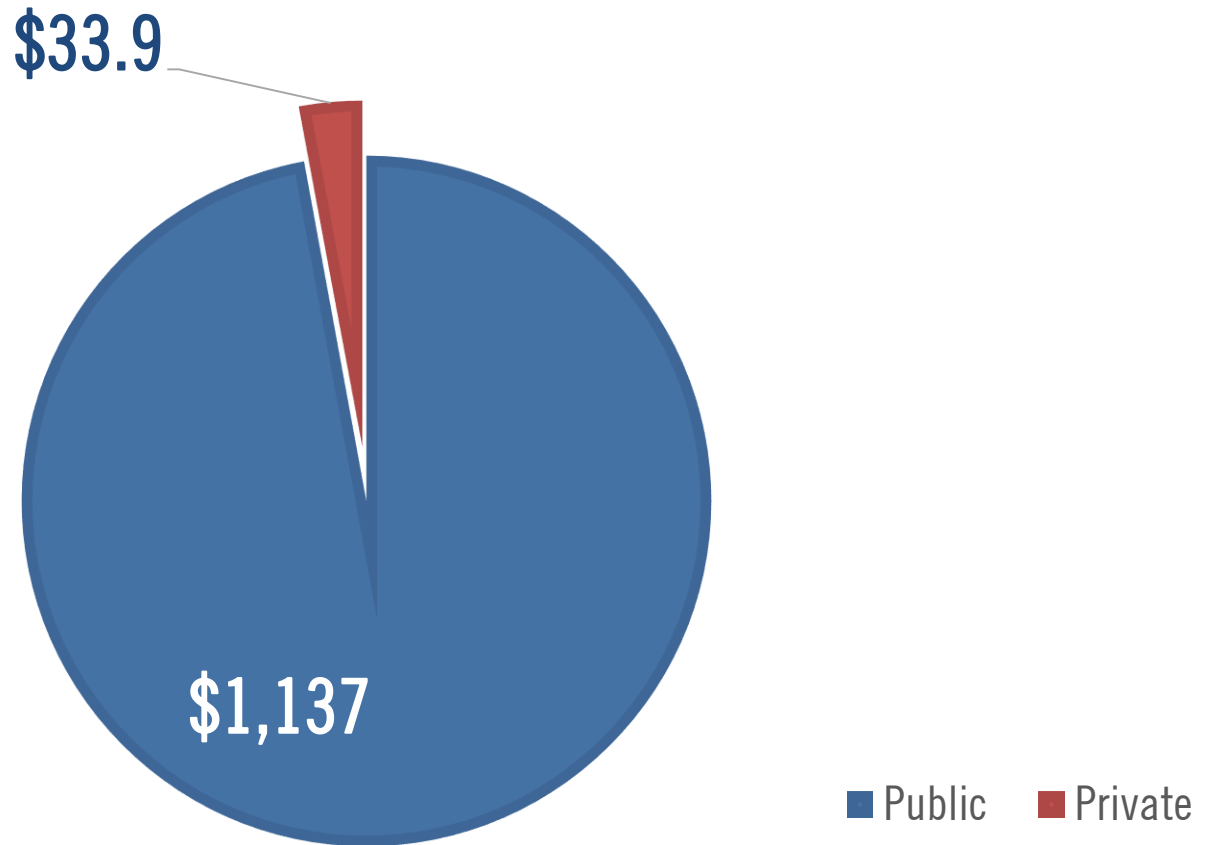


Aligned over \$1B of long-  
term public resources



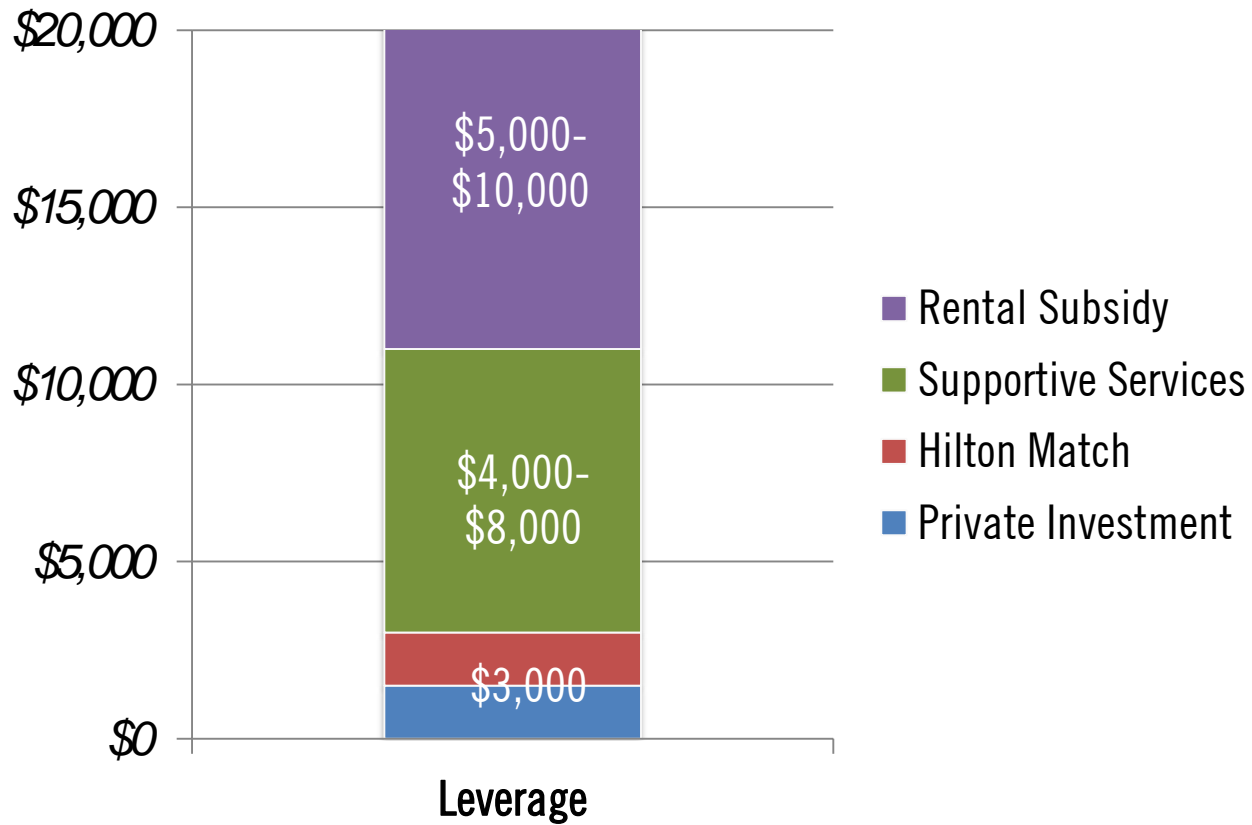
# Cumulative Leverage

(in \$ millions)



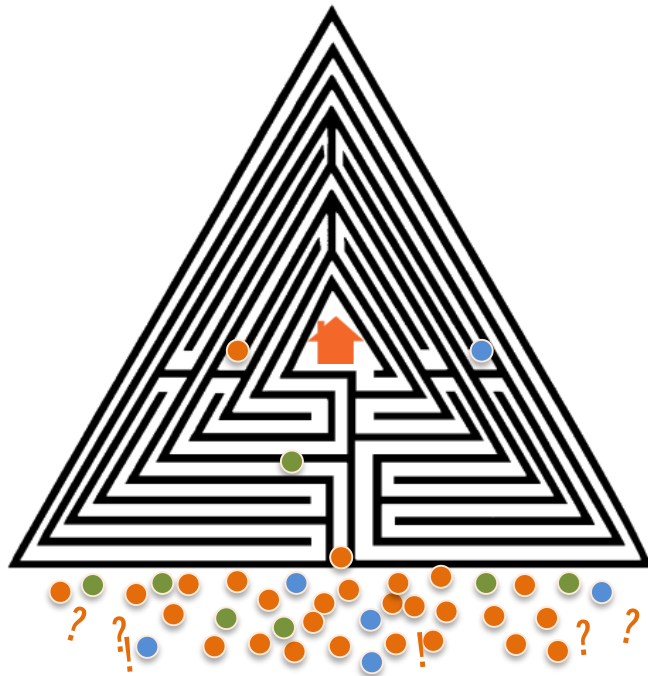
# Leverage Snapshot

(per client/year)

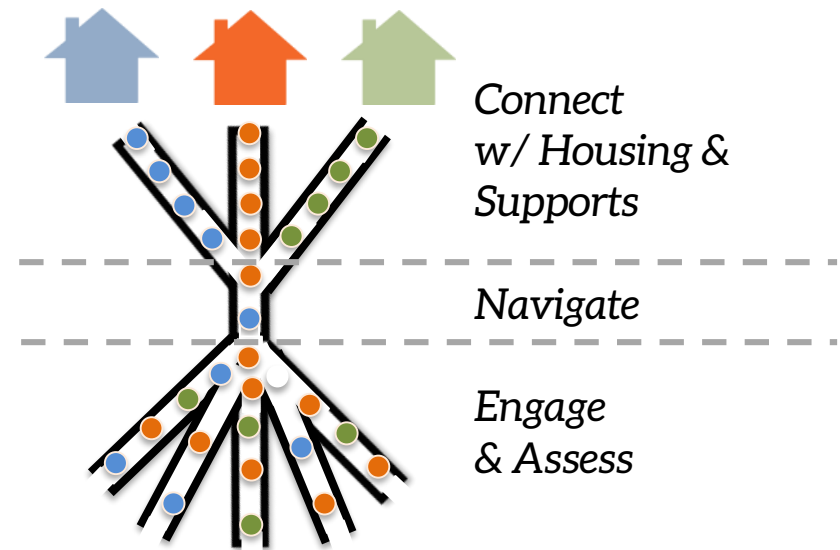


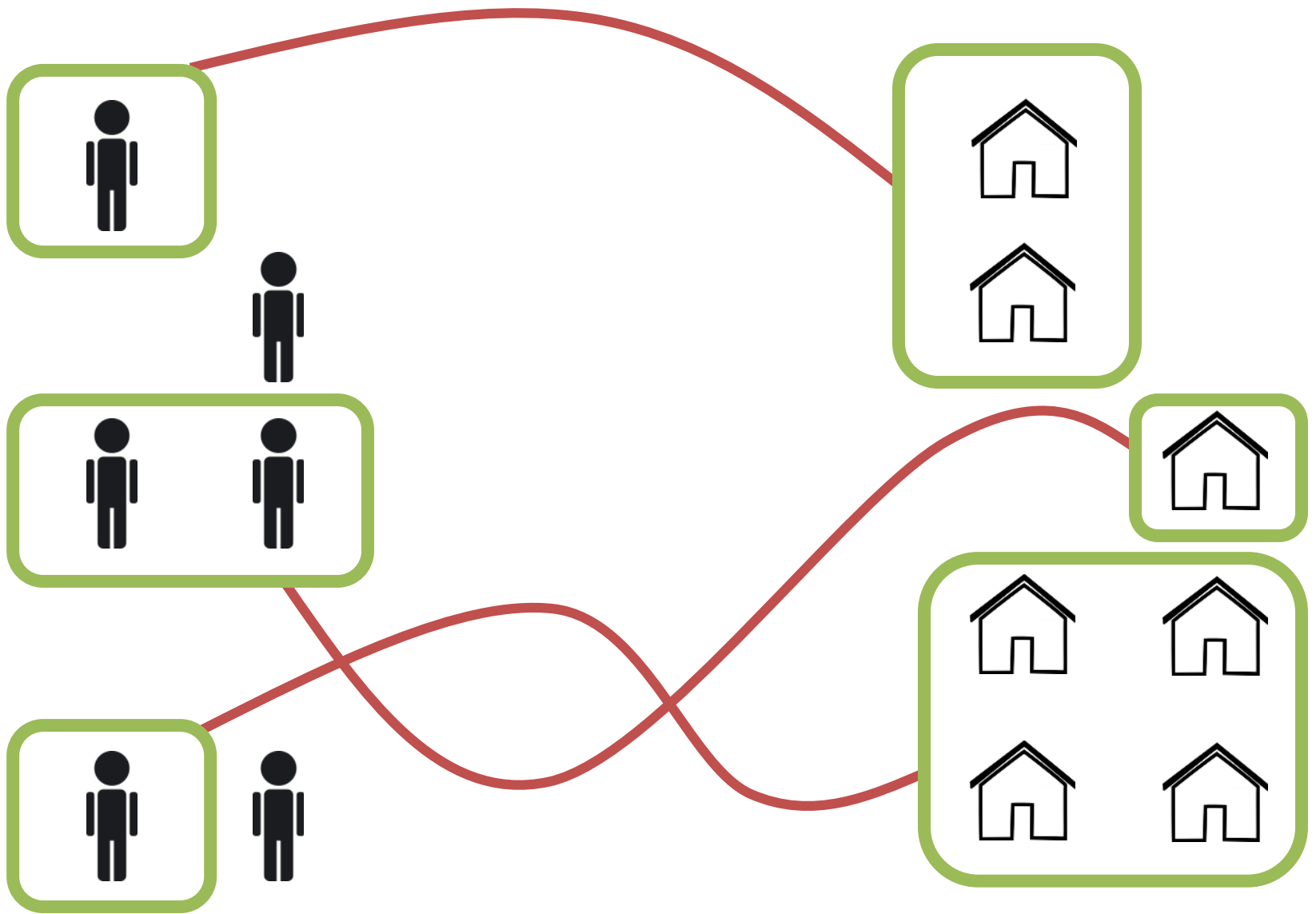
# #3: Improved Connections

*Without CES*



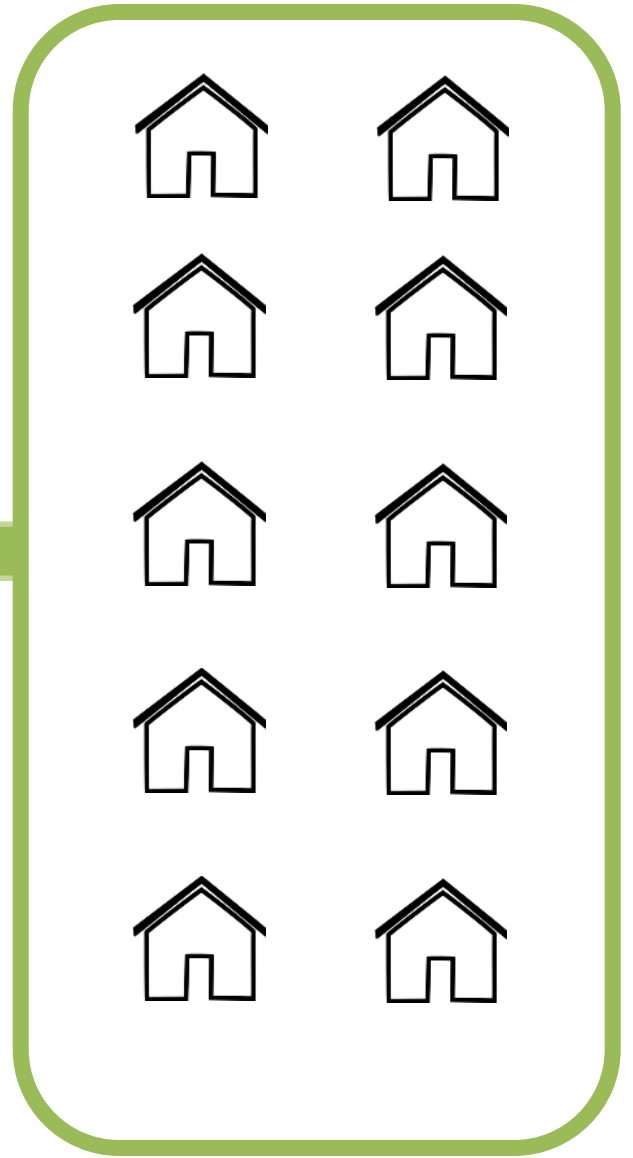
*With CES*

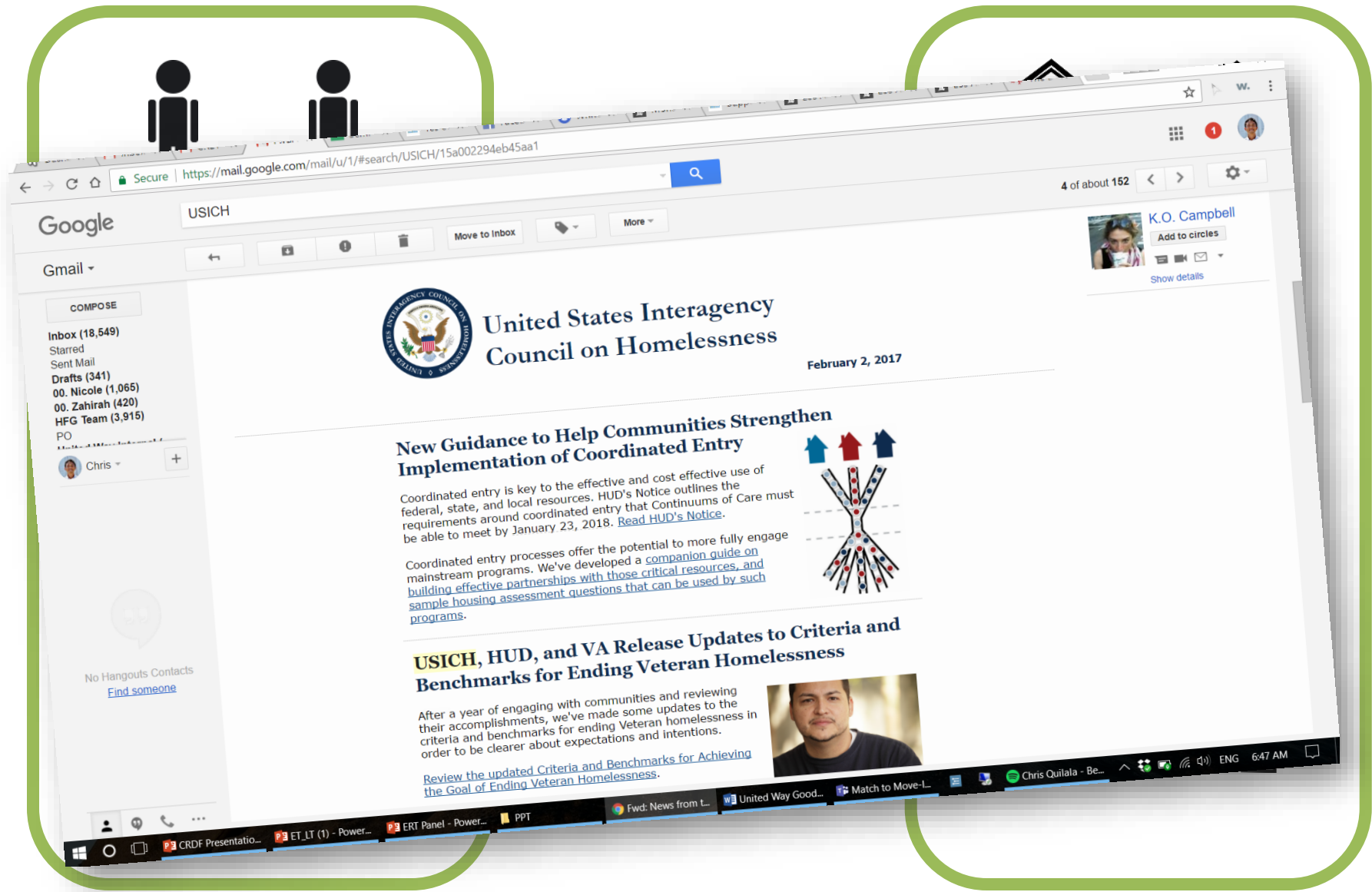






CES





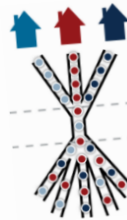
## United States Interagency Council on Homelessness

February 2, 2017

### New Guidance to Help Communities Strengthen Implementation of Coordinated Entry

Coordinated entry is key to the effective and cost effective use of federal, state, and local resources. HUD's Notice outlines the requirements around coordinated entry that Continuums of Care must be able to meet by January 23, 2018. [Read HUD's Notice](#).

Coordinated entry processes offer the potential to more fully engage mainstream programs. We've developed a [companion guide on building effective partnerships with those critical resources, and sample housing assessment questions that can be used by such programs](#).



### USICH, HUD, and VA Release Updates to Criteria and Benchmarks for Ending Veteran Homelessness

After a year of engaging with communities and reviewing their accomplishments, we've made some updates to the criteria and benchmarks for ending Veteran homelessness in order to be clearer about expectations and intentions.

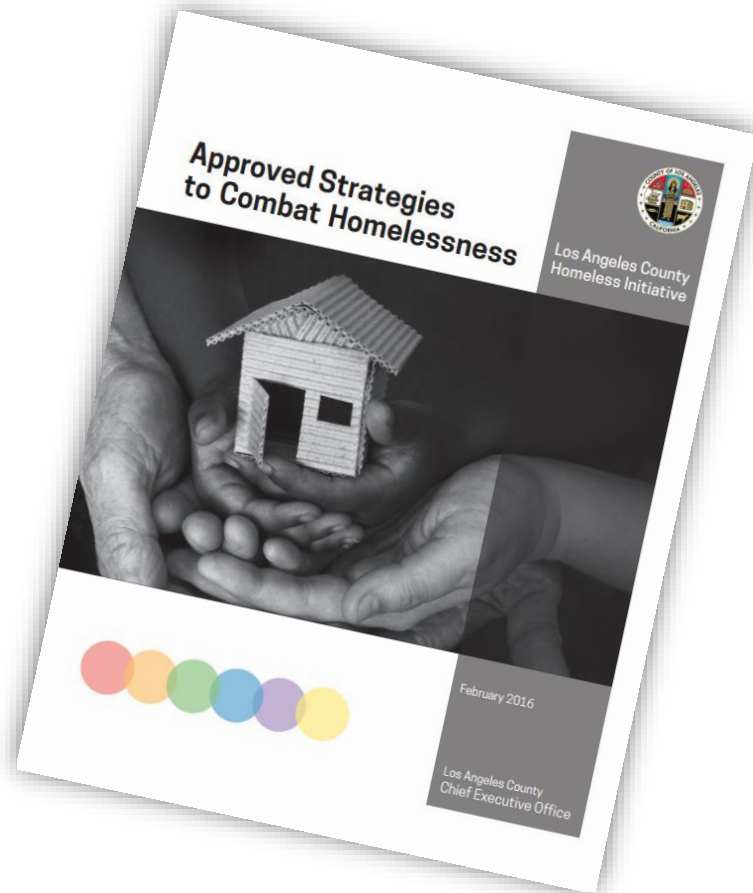
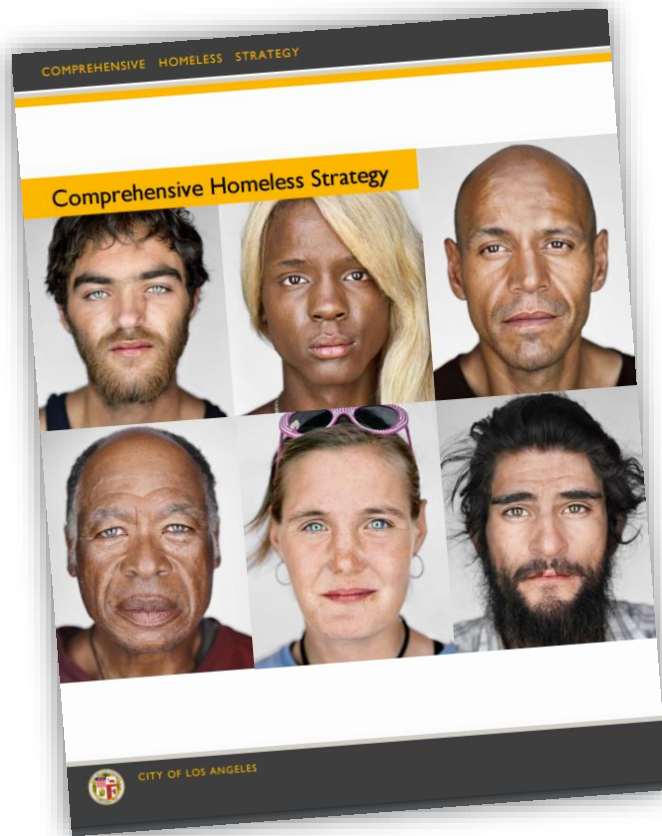
[Review the updated Criteria and Benchmarks for Achieving the Goal of Ending Veteran Homelessness.](#)





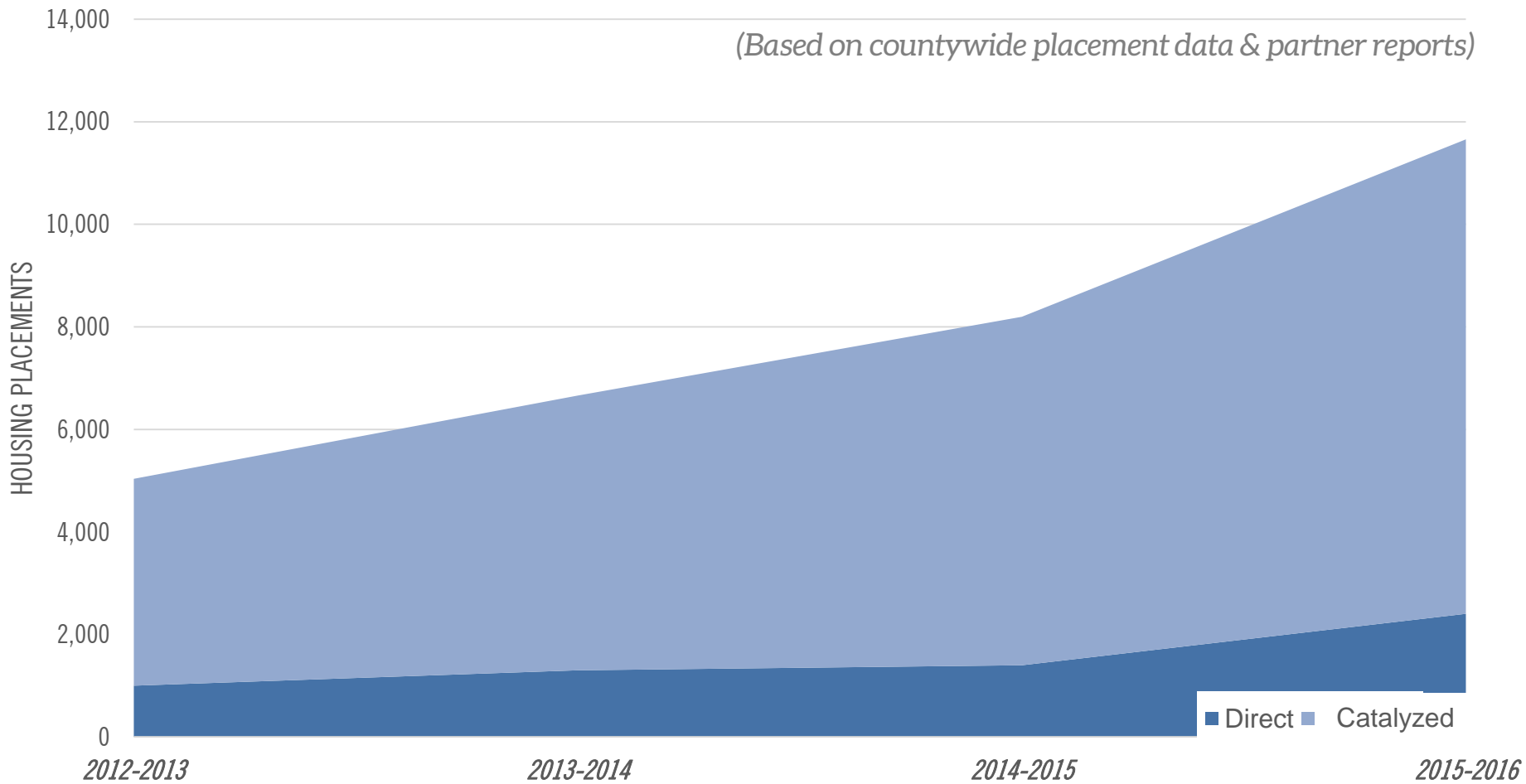
## #4: Stronger Public & Political Will

# City + County Plans





# Housing Placement



Directly supported the placement of over 6,000



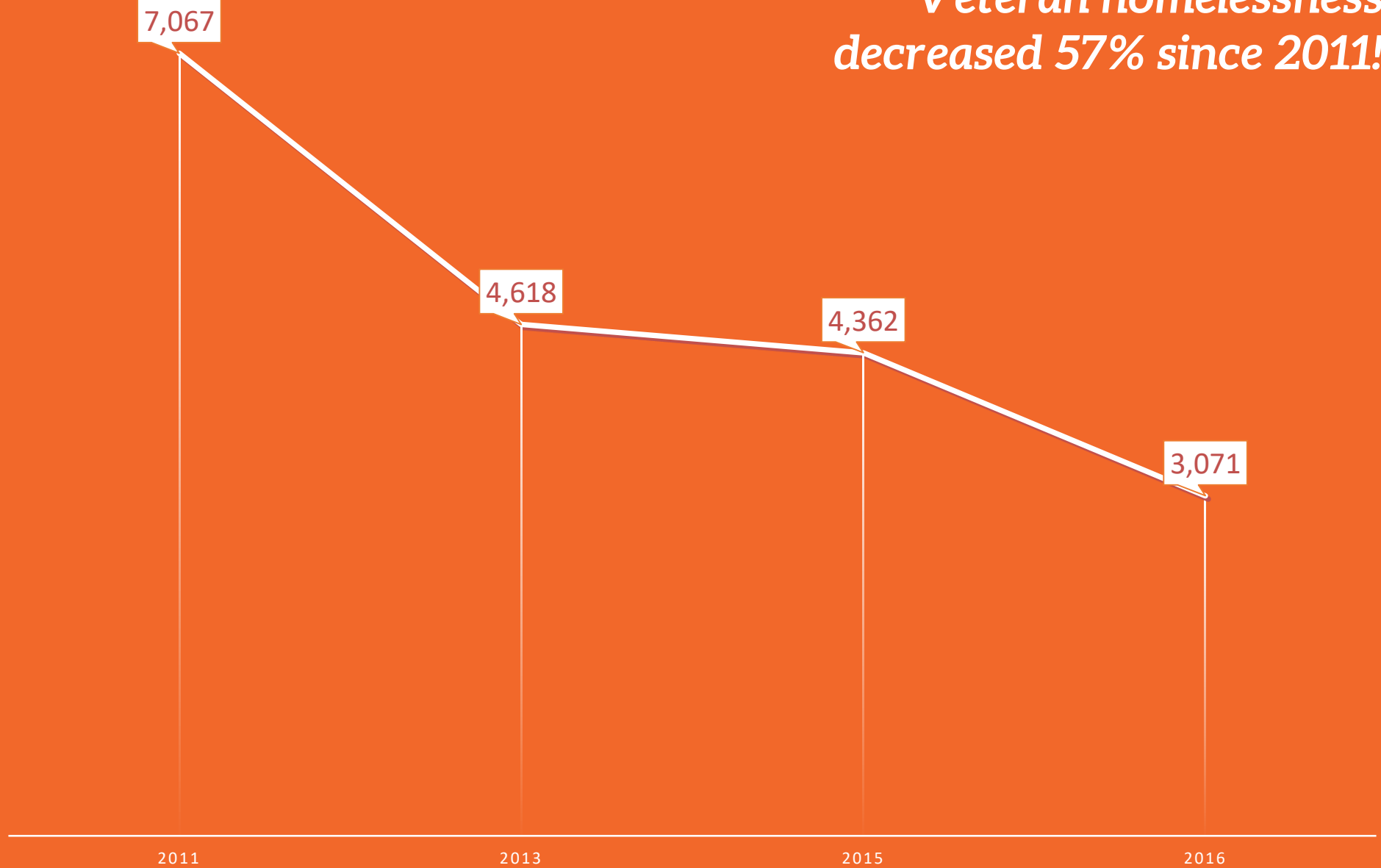
Catalyzed the placement of over 30,000 Angelenos

# ENDING VETERAN HOMELESSNESS

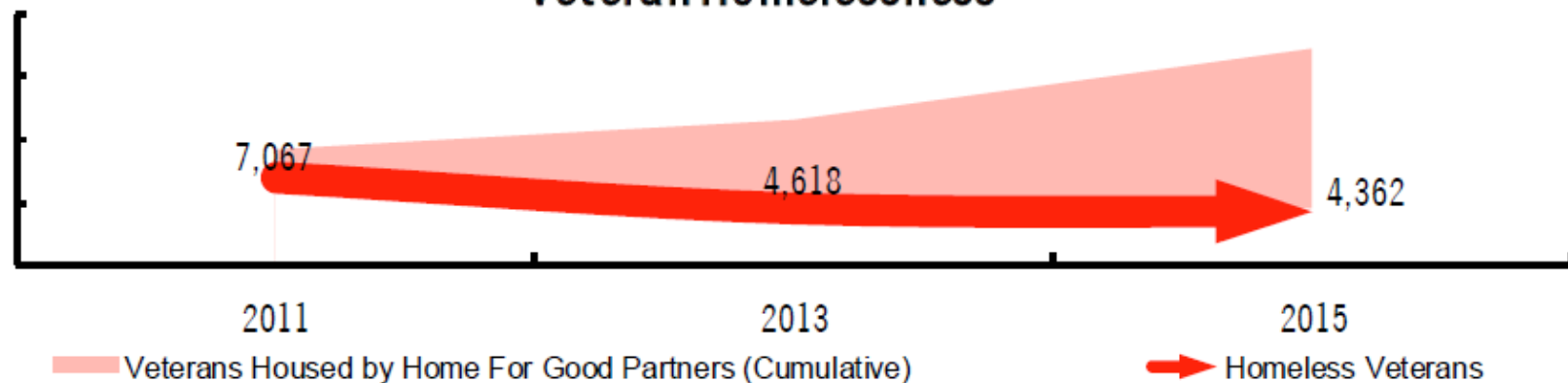


*(Based on LA County Homeless Count)*

*Veteran homelessness  
decreased 57% since 2011!*

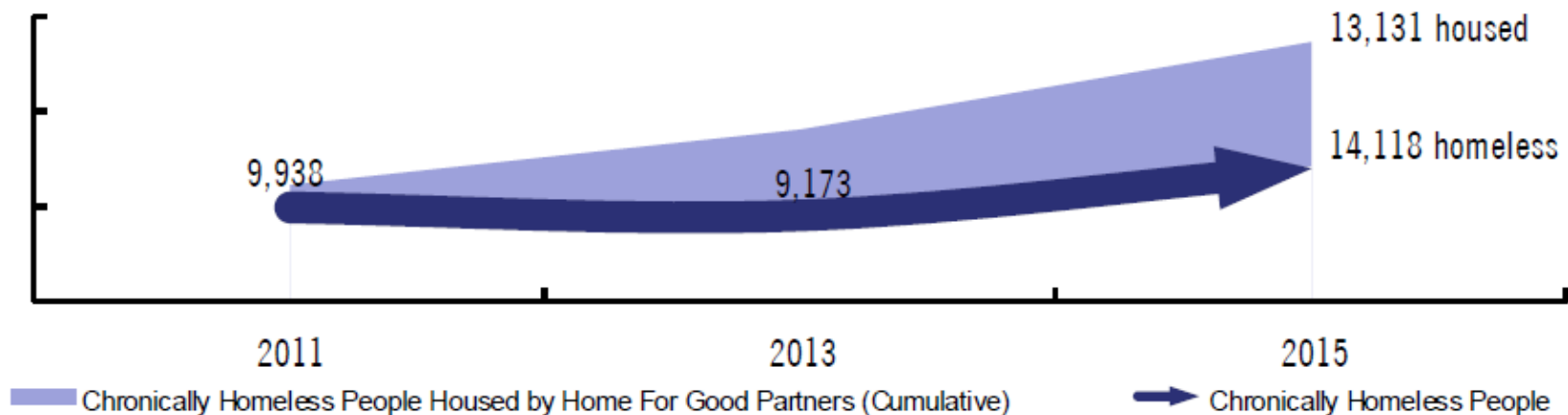


## Veteran Homelessness



But for the work of Home For Good's community partners, there would be **12,818** more homeless Veterans and **13,131** more Chronically Homeless people today.\*

## Chronic Homelessness



# Context

*Where are we now?*

# HOMELESS COUNT

2015: 44,359

2016: 46,874

+2,388

youth count\*

-1,291

veterans

-1,492

families

-705

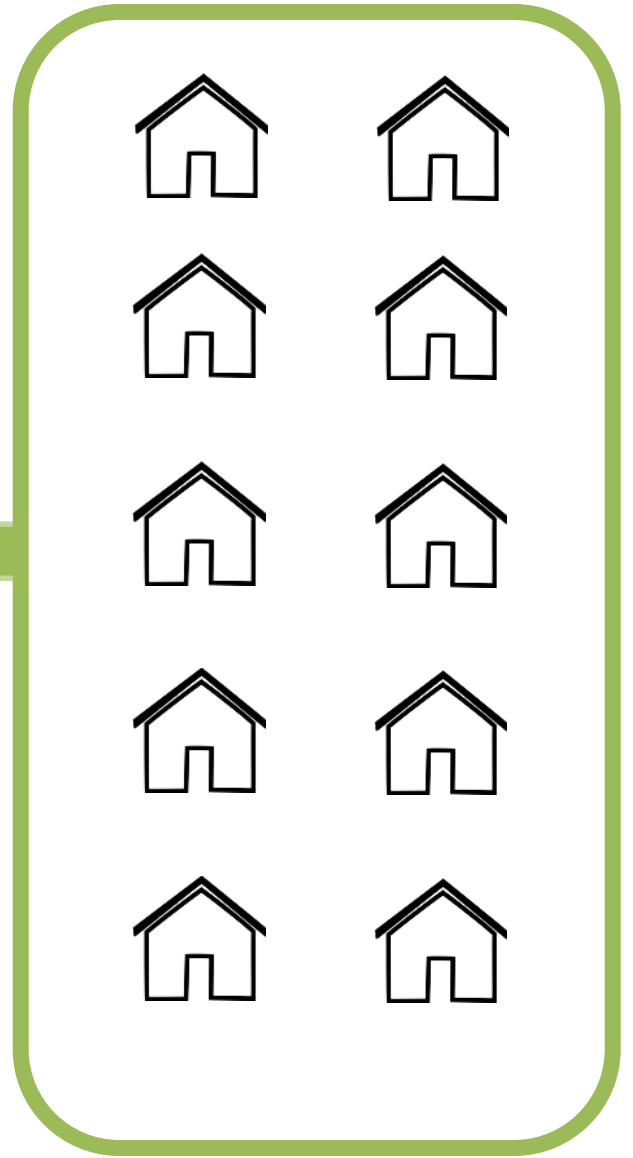
chronic homelessness

\*not tallied in 2015 total





CES





CES





# Resource Gap

Need	Total Gap (Units)
Permanent Supportive Housing	15,341
Rapid Re-Housing	8,376
Emergency Shelter	2,279
Prevention	2,555

	Amount
Total Cost	\$3-\$4 billion
Annual Ongoing Cost	\$400-\$500 million

Looking Forward

*what's next?*

# Challenges + Opportunities

1. Capacity
2. Moving Upstream
3. Housing Market

2012

Public

Private

2012

City

Public

County

Private

2013



2012

City

Public

County

Private



2014

2013

2012

City

Public

County

Private

2012 2013 2014 2015



City

Public

County

Private



2012 2013 2014 2015 2016



Cities

Public

County

Private

2017+

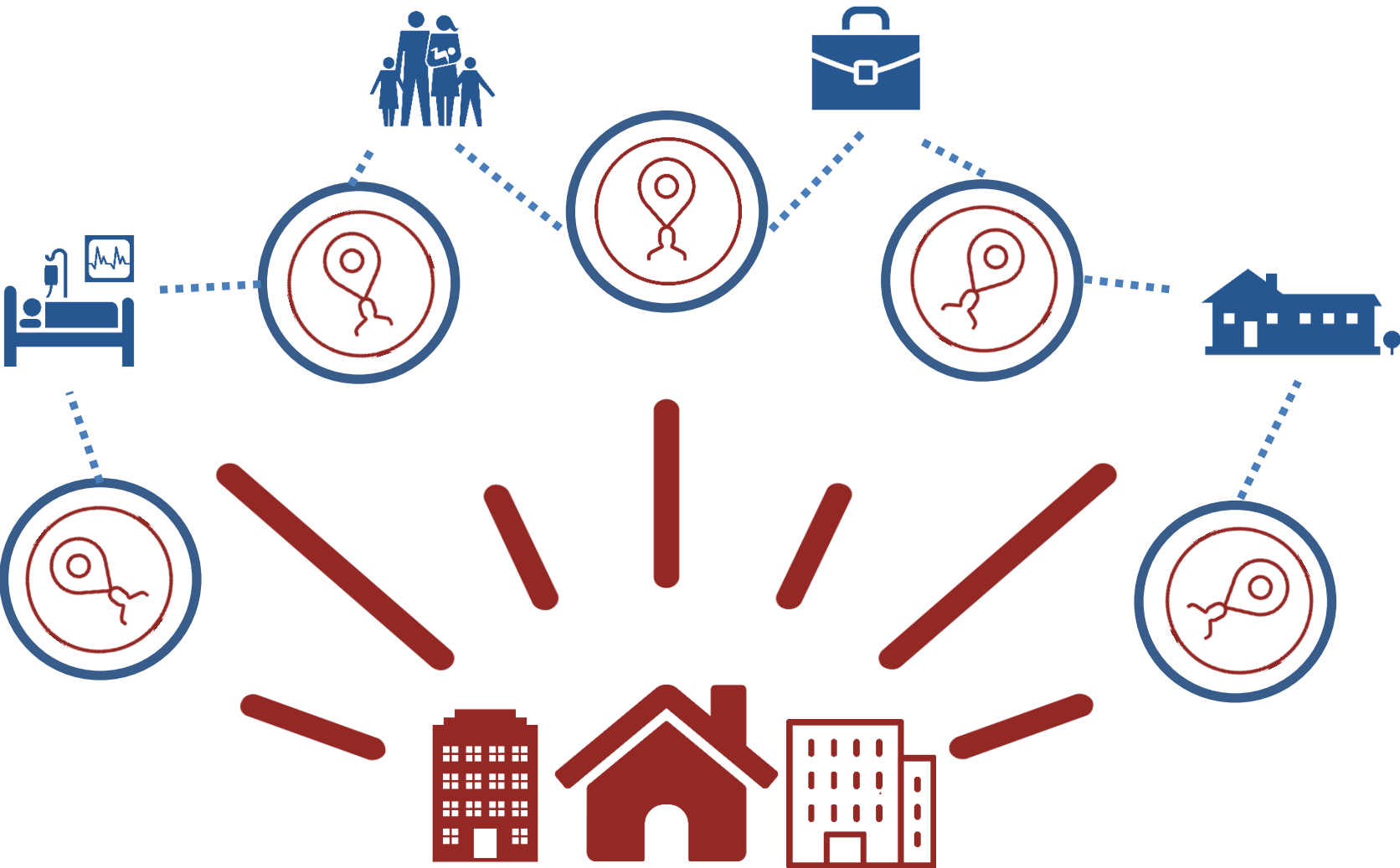
2016

2015

2014

2013

2012



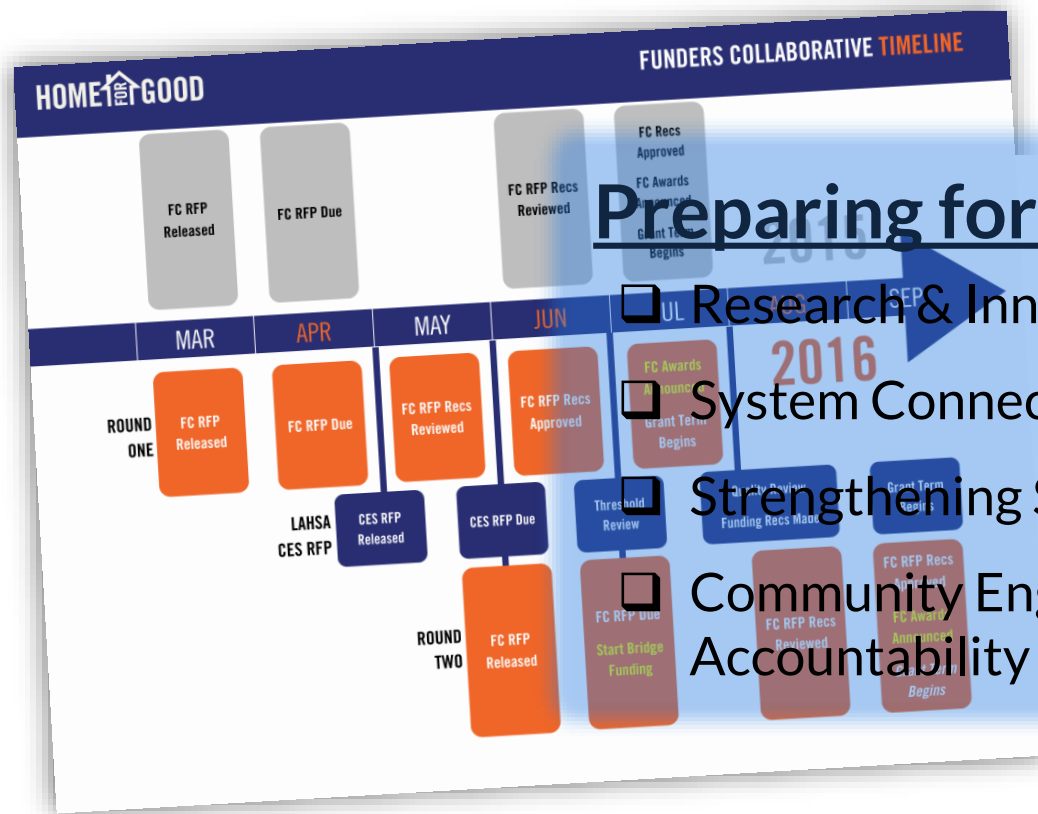
Cities

Public

County

Private

# Next Steps for Collaborative

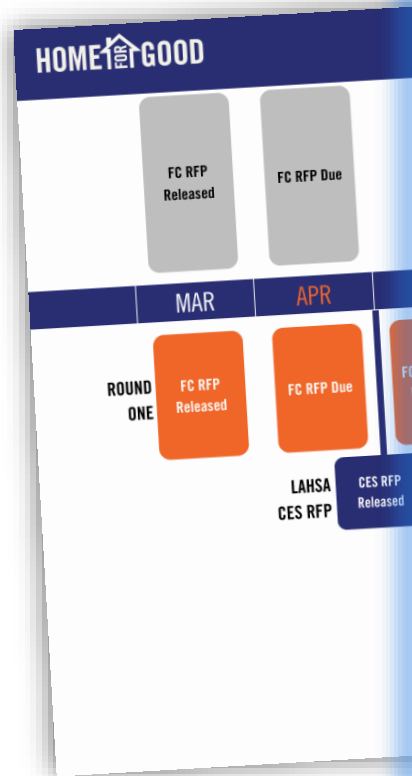


## Preparing for Scale (2017-18)

- Research & Innovation
- System Connections and Linkages
- Strengthening Services
- Community Engagement & Accountability

# Next Steps

## Preparing for Scale



- Research & Innovation
  - Chronic homelessness and homeless prevention
  - Best practices in street outreach, shelter, retention
  - Demographics and racial equity
  - Improved matching protocols for housing
  
- System Connections and Linkages
  - Private hospital system
  - Foster care system
  - Community integration (aftercare)
  - DV and prevention
  
- Strengthening Services
  - Provider/agency organizational capacity building
  - Leadership development
  - Expanding case management training academy
  
- Community Engagement & Accountability



# Thank You!

*"Coming together is a beginning; keeping together is progress; working together is success."  
- Henry Ford*

